



Once a junior high with halls full of students, the historic 1931 art-deco school designed by Seattle architect Earl Morrison has been transformed, all of which we invite you to explore. Discover a hotel with 72 guestrooms all with private bathrooms, and don't miss the restaurants; small bars; brewery; movie theater; full-size swimming pool; and meeting and event spaces—complete with our signature artistic touches! The five private event spaces will accommodate groups of 10 to 600 guests, complete with onsite catering and handcrafted McMenamins beverages.

Carve out your own Anderson School experience: have a specialty cocktail in the hallway, order drinks in the Principal's Office, play pinball in The Woodshop, plan a wedding in the lush courtyard space.

Throughout every wall, doorway, headboard and more, note the one-of-a-kind hand-painted artwork. Local and regional artists were inspired by historical photos, interviews and articles from the school, alumni, Bothell Historical Society and local families and colorful residents.

We invite you to work with our sales coordinators to craft the event you envision.

FACTS & FIGURES

LOCATION

Anderson School is located three blocks north of the intersection of Routes 527 and 522--approximately 13 miles north of Seattle, Washington.

18607 Bothell Way NE
Bothell, WA 98011
(425) 398-0127

ACCOMMODATIONS

Located in the main 1931 art-deco building, classrooms have been transformed into 72 guestrooms--all with private baths, televisions and phones. Overnight guests receive complimentary use of the swimming pool.

EVENT SPACE

There are 5 private event spaces accommodating groups of 10 to 600 guests complete with onsite catering and handcrafted beverages.

WiFi

We are pleased to offer complimentary wireless Internet access throughout the property, including event spaces and guest rooms.

NON-SMOKING POLICY

McMenamins Anderson School does not allow smoking, except in designated smoking areas outside.

GREEN INITIATIVE

Since McMenamins' early days, recycling has been handled on a pub-by-pub basis and varies from property to property. We employ two environmental coordinators (one of whom has held this position for more than 15 years) who oversee reducing, reusing and recycling the company's waste. We also work to prevent energy waste and promote energy savings and efficiency.

LOCAL ATTRACTIONS

Bothell neighbors the popular Woodinville wine country, home to more than 100 wineries and tasting rooms. Visitors to the region enjoy cycling the Burke-Gilman and Sammamish River trails, 38 miles of paved multi-use path stretching from Seattle to Redmond; sailing on Lake Washington and hiking in the nearby Cascade Mountains.

ANDERSON SCHOOL ATTRACTIONS

NORTH SHORE LAGOON: SWIM AND DINE

Concealed within a humble brick exterior, our North Shore Lagoon is a lost harbor of sorts, one that is built of bamboo and warrants exploration and invites imagination. Float or backstroke through the intriguing waters of the saltwater swimming pool, flanked with Hawaiian flora. Perched above the water is where you can dine on cuisine inspired by the South Seas, Caribbean and South America or drink potions infused with one of the more than 80 unique rums because after all, this tropical spirit is king at the North Shore Lagoon Bar.

THE SHED

Here in the cozy shed, the specialty is whiskey and classic cocktails best consumed next to a fire--and we've got fireplaces indoors and out, with patio or bench seating for your guests to gather.

THE WOODSHOP

In a nod to its former function as the school's woodshop, this space was designed around an old cigar shop solid wood bar that still boasts hidden compartments behind the displays, as well as our largest spirits selection on property. You can watch live sports on our screens and enjoy a game of shuffleboard, pool or pinball.

This is also where you'll find our classic pub fare: Country Natural Beef burgers, tots, pizza, salads and more.

TAVERN ON THE SQUARE

Located in what was once the school cafeteria, this farm-to-table restaurant fills with light beaming through the full-length windows and stained glass, with a fireplace and its hearth providing warmth at cooler times. Menus feature market-fresh seafood, local produce and house-made pastries and desserts—including ice cream from the Anderson School Creamery. An extensive cocktail menu of upscale classics and modern inventions are featured alongside McMenamins' handcrafted ales, wine, spirits, cider and coffee. Choose from seating along the classic bar, cozy booths, or at tables inside or out.

BREWERY

Once part of the school's woodshop, this space is now the home of a spacious brewery. Our brewers craft McMenamins standards (Hammerhead, Ruby and Terminator Stout) and seasonals as well as rotating property selections such as Bobcat Pale Ale.

THE MARKET

Be sure and make time to stop in The Market. We have a full line of Anderson School apparel and merchandise.

Take home McMenamins handcrafted beverages, including bottles of wine, spirits, signature handcrafted ales and select regional offerings. We also have coffee beans from our roastery, or opt for a drink from our full espresso bar. Pair that with Anderson bakery items offered fresh daily. Bring or purchase a growler for filling with seasonal cider and beer to go. You can also purchase a pint in the Market to enjoy while you shop!

MOVIE THEATER

What's a school without movies? The reels have made way for digital, but we combine historic charm and modern theater amenities. New releases are shown daily with advance tickets available online. Order a burger, tots, movie concessions and a handcrafted ale from the adjacent bar and we'll deliver it to your seat.

ANDERSON SCHOOL EVENT SPACES

HAYNES' HALL

Booked in conjunction with Haynes' Square from June 1 - October 15

Indoor/Outdoor Venue

Capacity up to 600 guests

PATTY MURRAY ROOM

Access to outdoor deck

Capacity up to 40 guests

ANDY'S ROOM

Couches and a large table, access to outdoor deck

Capacity up to 25 guests

ERMA OLIN ROOM

Pub-style seating

*Capacity up to 20 guests**

** Not available Friday or Saturday night*

WEGNER'S GARDEN

Outdoor venue available June 1 - October 15

Capacity up to 100 guests

THORNDIKE COMMUNITY ROOM

Must be a Bothell resident to book this room

Booking through the City of Bothell at (425) 806-6760

Full information and reservation form available at mcmenamins.com

Onsite catering through McMenamins

Capacity up to 35 guests

BOOKING INFORMATION

Meeting and event spaces are reserved through our sales staff. Food and beverages are provided by our onsite catering department. Minimum food and beverage purchases apply to each event space, varying on the size of the room, time of day and day of the week. Each function requires an advance deposit with the balance due upon conclusion of the event. Direct billing option is available for corporate events with advance arrangements.

Rooms are fully equipped for business meetings, social events and weddings, including WiFi. LCD projectors, flip charts and other materials are available upon request.

For more information, contact our sales staff:
(425) 398-0127

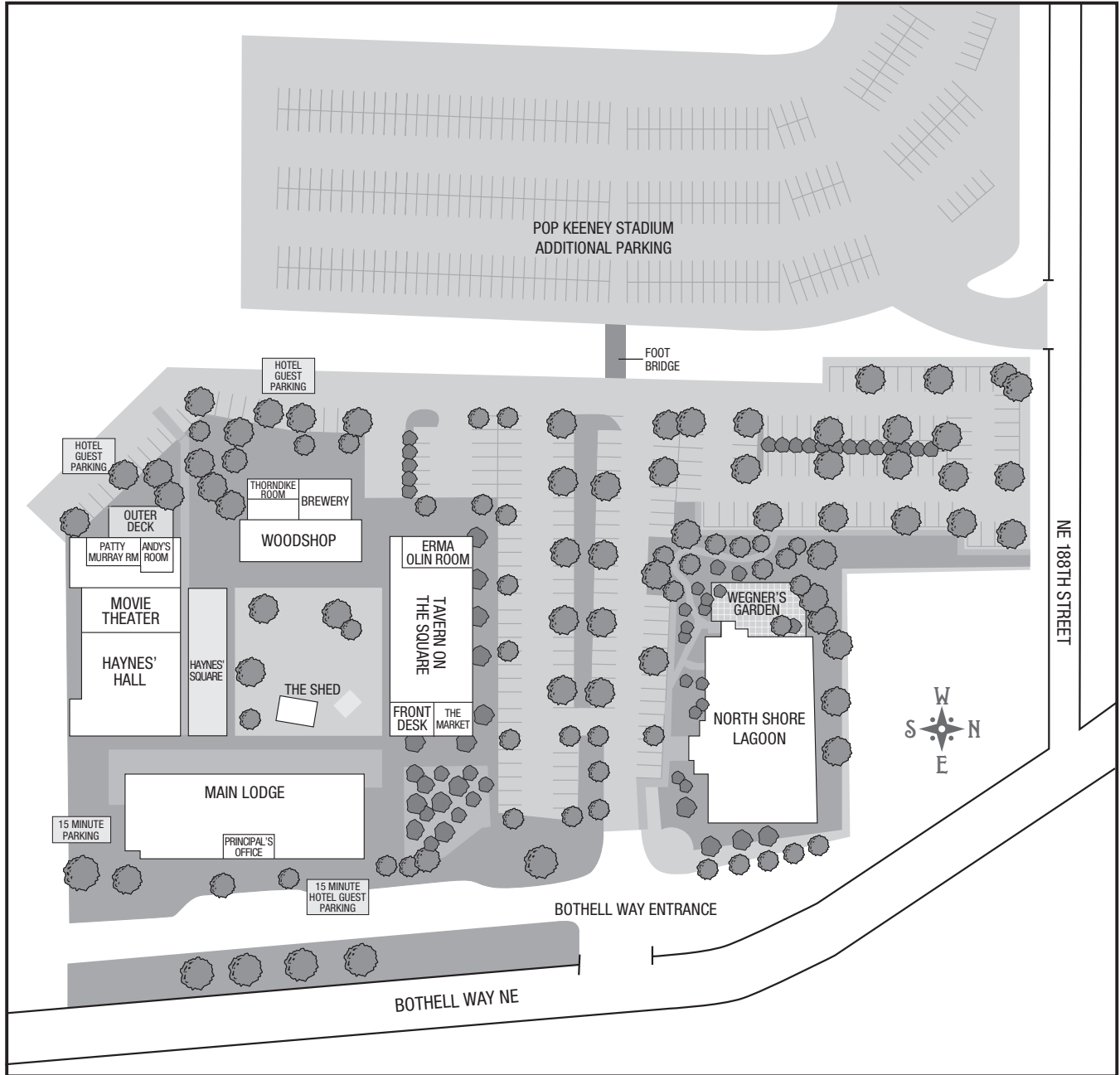
MEETING ROOM SPECIFICATIONS

	Maximum Number of Guests per Set-up Style					
	Buffet 60-inch Round Tables	Reception	Classroom	Theater	Conference Square	Conference U-Shape
Haynes' Hall (Booked in conjunction with Haynes' Square June 1 - October 15)	285	600 (STANDING)	300	550	122	122
Patty Murray Room	32	40 (STANDING)	30	40	16	16
Andy's Room	N/A	25 (STANDING) 20 (SEATED)	N/A	N/A	12 (AT TABLE)	N/A
Wegner's Garden	100	100	N/A	100	N/A	N/A
Erma Olin Room	Seats 20 guests with pub-style seating					
Thorndike Community Room*	35	35	N/A	N/A	N/A	

Please speak with a sales coordinator if you have questions about capacity.

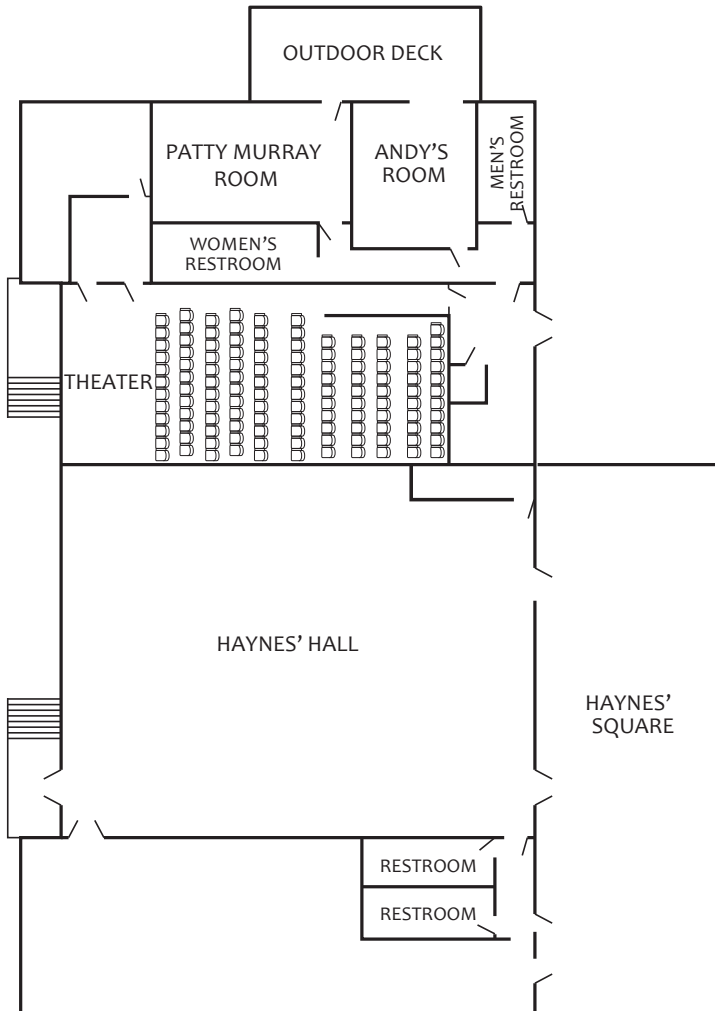
*Available only for residents of Bothell.

PROPERTY MAP



The Anderson School has limited complimentary parking. If our lot is full, hotel guests and patrons are welcome to park at the Pop Keeney Stadium located west of our parking lot, if there is not a sporting event at that time.
(Entrance to this overflow parking lot is off NE 188th St.)

EVENT SPACES



HAYNES' HALL

Located in the old gym, our largest space, Haynes' Hall, is 4300 square feet and can accommodate up to 285 guests seated and up to 600 for an event such as live music.

Capacity up to 600 guests.

HAYNES' SQUARE

Named for an early farming family in the acres nearby, this outdoor venue is available in conjunction with Haynes' Hall from June 1 - October 15.

PATTY MURRAY ROOM

Named for this Bothell native, a daughter of a Bothell merchant, Patty Murray became the first female U.S. Senator from Washington state in 1993. This Room is our second-largest event space at 608 square feet, and opens onto a deck shared with the adjacent private event space.

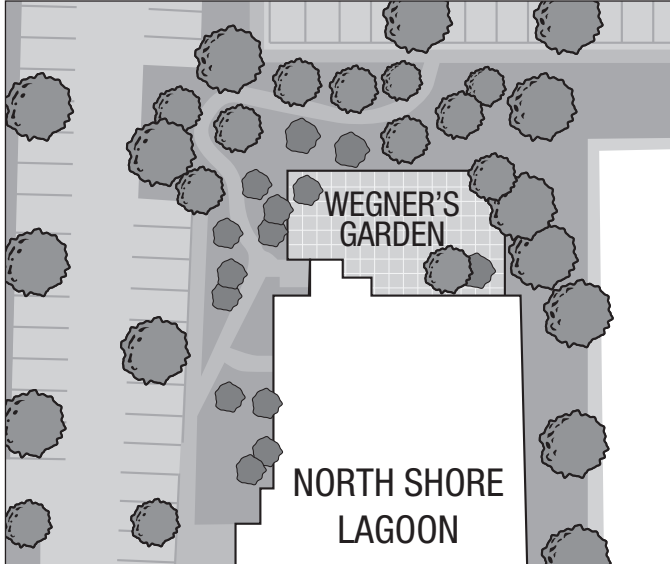
Capacity up to 40 guests.

ANDY'S ROOM

Named for one of Bothell's first settlers, Andy's Room is 460 square feet and is set up with comfortable lounge furniture and a large table. It opens onto a deck shared with the Patty Murray Room.

Capacity up to 25 guests.

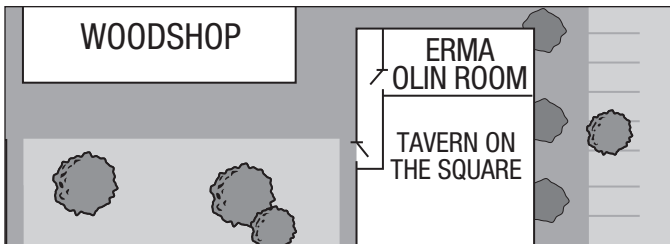
EVENT SPACES (continued)



WEGNER'S GARDEN

Wegner's Garden is located on the west side of the pool building and is a total of 1300 square feet. This space is entirely outdoors.

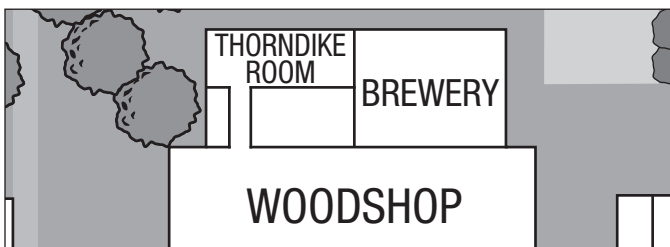
Capacity up to 100 guests.



ERMA OLIN ROOM

Just off the Tavern on the Square, this room has pub-style seating, a wall of windows and a TV.

Capacity up to 20 guests.



THORNDIKE COMMUNITY ROOM

You must be a Bothell resident to book this room. Booking is handled through the City of Bothell at (425) 806-6760. Full information packet and reservation form available online at mcmenamins.com. Catering for this space available through McMenamins.

Capacity up to 35 guests